



TOOLS AND ACCESSORIES

Accuracy and Efficiency in Practice: Having the Right Tools for the Job

The right tools streamline tasks and optimize workflow efficiency

Having the right tools is paramount for technicians working in tele/data communications. This field is highly technical and demands precision and efficiency in installation, troubleshooting, and maintenance. These tools are not merely conveniences; they are essential components that directly impact efficiency, accuracy, and safety throughout the project lifecycle. Tasks that would be time-consuming or impossible without specialized equipment can be completed swiftly and with minimal disruption to operations.

The safety of both technicians and the infrastructure they work on relies on having the appropriate tools. Working with high-voltage equipment or climbing communication towers poses significant risks, and using improper tools only exacerbates these dangers. The right tools designed for specific tasks minimize risks and ensure compliance with safety standards.

Netceed supplies state-of-the-art tools and test equipment from the largest top-quality manufacturers.

Netceed has the Tools You Need for:

- **Aerial Installation**
- **Cable Pulling & Jetting**
- **Cable Fishing & Rodding**
- **Field Installation**
- **Hand Tools**
- **Power Tools**
- **Aerosols & Identification**
- **Personal Safety**
- **Site Protection**

Aerial Installation



GMP - NTATCL000053 - J2 Cable Lasher

Used to lash overhead cable, duct, or numerous cables to a supporting strand (messenger), or to an existing lashed cable with a stainless steel lashing wire. The lasher's body is cylindrical to help it slip more easily through branches and obstructions.

Key Features:

- Built-in mechanical brake to prevent unintended reversal, and an automatic drum lock for easy span transfers
- All-range tensioning device for optimum strand traction with high strength front and rear gates for tighter lashing



Klein - NTATOT000173 'Chicago' Grip

Temporary maintains grip tension until the wire or cable can be permanently terminated.

Key Features:

- Designed for use on aluminum, copper, weatherproof coated wire, PVC covered conductors, messenger, and guy strand
- Locking loop handles allow jaws to be held in an open position for easy placement on wire or cable



Klein - NTATOT000170 'Haven's' Cable Grip

Designed for use with messenger and guy strand cable with the diameter range of 0.125 to 0.500".

Key Features:

- Designed for use when light, compact grip is desired and where conductor damage is not a factor
- Gripping pressure of the knurled jaw is applied to 1/4" of the cable area
- Available in various sizes and capacities



GMP - NTFTCT000117 - CR Collapsible Power Reel

Used for rapidly stringing or taking up wire or small diameter cable. Ideal for placing or removing aerial cable, taking down wire, or pulling winch line into conduits. Can be used for pulling in poly rope or tape, where the reel will only be used as a pulling capstan and not as a storage device.

Key Features:

- Consists of a spindle with a fixed spider and sliding spider to which are attached six rim segments. Made of heat treated aluminum with a durable yellow finish
- A half turn of the locking member collapses all six movable segments, allowing the quick mounting or removal of coils
- Capacity of 1,600' of 1/4" wire rope with a maximum allowable pull of 3500lbs
- Can store a 200lbs coil of wire

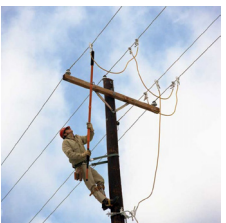


Jameson - NTATOT000168 Pole Lay-up Kit w/ Wire Raiser

Use to lift wire or cable during aerial installation, also pulls or lifts obstacles out of the way. Poles made of hollow-core fiberglass for light weight, superior control, and exceptional bending strength.

Kit includes:

- 3 x 6' Hollow Core Extension Poles
- 1 x 3' Hollow Core Extension Pole
- 1 x Wire and Limb Raiser Tool Head



Hubbell - NTATOT000171 1 Ton Link Style Chain Hoist

Lifting tool that is proof-tested and factory operated at 150% of capacity rating. Lightweight high-strength handle and sheave housings are made of heat-treated aluminum.

Key Features:

- Forged steel 360° swivelling load hooks with spring-loaded latches
- Controls automatically lock when under load
- Ratchet handle swings to either side

Aerial Installation



GMP - NTATCB000120 - Universal Stringing Block Power Roller

Features high strength and low weight with a working load limit of 2,500 lbs. Can be configured with 5 different mounting options. Permanently lubricated bearings provide long term durability and an extreme temperature operating range.

Key Features:

- Profile machined groove for concentricity
- Cast from A356 Aluminum and heat treated
- Permanently lubricated to withstand -5F to 250F
- Double shielded, deep groove ball bearings
- Industry standard positive locking latch



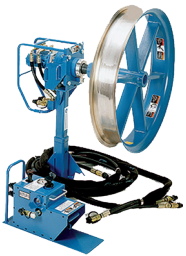
Bashlin - NTATOT000104 - Pole Sling

Heavy duty 36" pole sling is designed for easy use with a shotgun stick 3' pole sling. Various lengths available.

Key Features:

- 2 O-Rings - Designed so the one O-ring will pass through the other
- Constructed from 1 3/4" nylon web

Cable Pulling & Jetting



Condux - NTCF000059 - Fiber Optic Cable Puller

Consist of a hydraulic motor, variable speed foot control, manual flow control valve for adjusting maximum speed, and a manually adjustable pressure relief valve for adjusting the ultimate pull tension.

Key Features:

- Load cell torque input for the most accurate tension measuring
- Not affected by changes in oil temperature, component age, and power source
- Does not need to be recalibrated under different weather condition



Condux - NTCF000060 30" Capstan for Cable Puller

To conform to the many specifications of fiber optic cable available, and to offer more cable pulling capabilities, Condux offers several sizes of capstans that fit the **Fiber Optic Cable Puller**. These bayonet style capstans are offered in 12", 30", 42", and 50" diameters for a standard 27/16" diameter bayonet style shaft.

Key Features:

- Used is for pulling innerduct power, telephone, or coaxial cables
- Conforms to the specifications of fiber optic cable available



Condux - NTCF000061 Remote Mounting Stand for Cable Puller

For fiber optic cable pulling applications that demand flexibility in set-up, the remote mounting stand allows positioning of the cable puller well away from the power source. Easy to set up, the unit is both sturdy and compact.

Key Features:

- 2 1/2" square mount to accommodate any Fiber Optic Cable Puller



Condux - NTCF000286 - Mini Corner Cable Guide

A versatile tool designed to aid pulling through manholes, vaults, pull boxes, handholes, and more. It's small footprint of ~ 10" wide allows it to be mounted in many different applications where bend radius is not a concern.

Key Features:

- Hardened steel rollers
- Designed to protect polyester ropes, tapes and even steel winch lines during pullback operation
- 10,000 lb. cable tension load capacity



Cable Pulling & Jetting



Condux - NTCPSJ000538
7/8" 2500 lb. Champion Pulling Swivel
 For underground and overhead pulling applications. Clevis pins are heat treated to prevent pin damage when using steel shackles. Manufactured with three angular contact or deep groove ball bearings, which allow the swivel to rotate beyond its rated load.

- Key Features:**
- Tested and inspected to ISO 9001:2000 quality standards
 - Precision machined from high grade stainless steel



Condux - NTCPE000537
Fixed Head Innerduct Pulling Eye
 Tapered buttress threads thread into the innerduct for maximum pulling strength. Will not pull out of the innerduct until the pulling tensions have greatly exceeded the maximum pulling tensions recommended by the innerduct manufacturers.

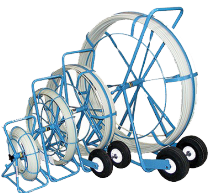
- Key Features:**
- These eyes connect directly to a Condux **Champion Pulling Swivel**
 - Depending on innerduct ID, available in 1/4" increments from 3/4" to 2"



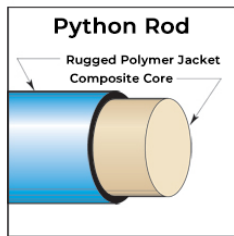
Plumett - NTCBBM000064 - CableJet
 Designed for blowing or floating telecommunication cables and fibers (optical fiber, coaxial, or multipair) in preinstalled ducts. The CableJet is equipped with a distance and speed counter for a better control of the installation. Compact, light and easy to use jetting device comes with a toolbox containing all the tools needed for maintenance and service.

- Key Features:**
- For cables and fibers from Ø 9 to 18 mm and for ducts OD 20 to 63 mm
 - **Includes:** Box for tools, inserts, wear parts and consumables (seals, lubricant, etc.), set of tools, speed and distance indicator, air hose and stop valve to connect to compressor, bottle of vJetting Lube

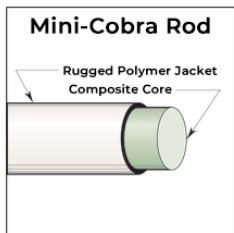
Cable Fishing & Rodding



Condux - NTFRDR000361 - Duct Rod
 Condux currently offers two types of duct rod: Python® and Mini-Cobra®. Each has a glass reinforced composite core jacketed in a rugged plastic coating to ensure long life. Both have excellent flexural strength, compressive strength, fatigue resistance, and memory. They also have favorable electrical and thermal properties that make them safe for use in a cable-occupied duct. Duct rods are suitable for pulling back winch line or small diameter cable.

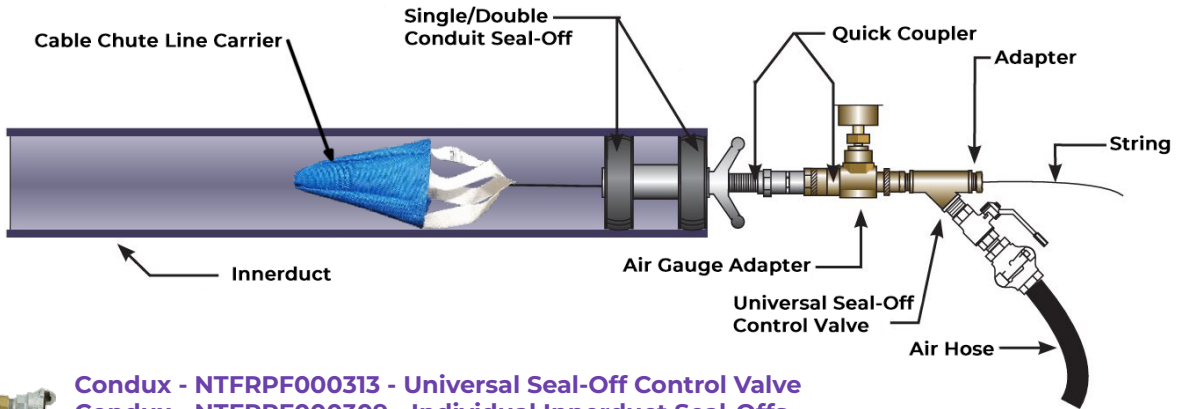


Python: Best suited for less demanding applications. Heavy-duty outer plastic coating to resist abrasions and reduce wear. Includes one male and one female end fitting and a tapered head.



Mini-Cobra: Includes 3/16" and 1/4" diameter rods used primarily for smaller duct sizes and shorter runs. The rod has the same flexibility and strength features of the Python rod and comes wound in 16" and 24" cages in 50' to 600' lengths. Includes two male end fittings and two tapered heads.

Cable Fishing & Rodding



- Condux - NTFRPF000313 - Universal Seal-Off Control Valve
- Condux - NTFRPF000309 - Individual Innerduct Seal-Offs
- Condux - NTFRPF000331 - Cable Chute Line Carrier



The **Universal Seal-Off Control Valve** Body combines with an **Individual Innerduct Seal-Off**, Single Conduit Seal-Off or Double Conduit Seal-Off and recommended Air Gauge Adapter to form a complete Seal-Off Assembly. The interchangeable attachments provide flexibility by allowing the purchase of a single valve body that can be used in a variety of applications depending on conduit size.

Included:

- Standard with an air valve to regulate flow
- Standard claw type air fitting and a 3/16" Rope Adapter



Condux **Cable Chute Line Carriers** are designed to pass through conduit without damaging the conduit or existing cable. To use a Cable Chute Line Carrier you would tie a line or webbing to a chute, insert the chute into the conduit or innerduct, and blow compressed air propelling the chute to the end of the duct.

Included:

- Handmade with the highest quality fabrics - nylon or leather
- Goes through a series of quality checks prior to shipping

Field Installation Tools



- Runpotec - NTFTMH000042 - XB500 Cable Roller System
- Runpotec - XB500-T Cable Roller System with Telescopic Extension

The compact X BOARD is a universal professional cable drum reel and unwinder for all types of cables and pipes (core cables, cable rings, cable drums, empty pipes, ropes, and cable drums). It enables trouble-free and efficient work without tangled cables. The compact platform X BOARD 'T' is enhanced with telescopic extensions.

Key Features:

- Holds up to 1,760lbs and fits almost every type of drum
- Especially suitable for damaged cable drums
- The 6 fold-out telescopic support extensions on the 'T' version can be extended up to 31.5"
- **Includes:** Box for tools, inserts, wear parts and consumables (seals, lubricant, etc.), set of tools, speed and distance indicator, air hose and stop valve to connect to compressor, bottle of vJetting Lube



Field Installation Tools



Jameson - NTFTTK000043 - Bucket-mount Divided Tool Tray

Versatile accessory for bucket trucks with endless customization options. Provides safe, convenient storage for tools outside the bucket. Ideal solution for organizing aerial hardware, anchors, clamps, drill bits, and more. Offers long-life durability without degregation of the tray material.

Key Features:

- Made of high-impact ABS construction
- Natural water repellent and UV resistance to withstand extreme weather conditions



Slingco - NTFTMH000051 - Reel Lifter

High capacity, compact unit that allows users in the utility construction industry to safely load, transport, and dispense wire and/or cable on-site.

Key Features:

- Allows for easy moving, relocating, and unspending reels in a warehouse
- Smooth rotation to unroll cable
- Counterweighted bottom arm for easy insertion in reel
- Saves time and manpower

Hand Tools



Klein - NMWLEL000015 - Dual Range High Voltage Tester

Dual-range non-contact tester checks for the presence of voltage in overhead conductors or finds faults in cables.

Key Features:

- LOW range for 50V AC to 1.5kV AC, HIGH range for 1.5kV AC to 132kV AC
- Audible and visual signals indicate the presence of voltage
- Water resistant
- Includes durable carrying case and 1 x 9 volt battery



Klein - NTFHT000235 - Bolt Cutters

Heavy-duty bolt cutters maximize crushing force to cut higher-strength steel than general purpose cutters.

Key Features:

- Handles have heavy vinyl grips with flat grips ends for 90-degree cuts
- All-purpose, center-cut jaws for soft, medium, and hard metals
- Forged, alloy tool steel jaws are precision ground for sure, efficient cutting and long life
- Lockplate reinforcement prevents jaw bolts from loosening or turning, keeps jaws in correct alignment
- Cutting capacities for soft and medium materials is up to Brinell 300, Rockwell C31
- Cutting capacities for hard materials is up to Brinell 400, Rockwell C42



Jonard - NTFHT000297 - Lineman's B Wrench

Bell System Type wrench designed with two open-ended wrench heads and an oval hole for turning pole steps.

Key Features:

- Large end of the wrench accommodates 5/8" and 3/4" bolts
- Small end of the wrench accommodates 3/8" bolts, 1/2" bolts, and 1/2" drive screw heads



Power Tools



Milwaukee - NTFTPT000058 - 7/16" Hex Utility HTIW w/ ONE-KEY™ Kit

Delivers the fastest drilling speed, more power, and is built for maximum control. The POWERSTATE™ brushless motor and all-new mechanism provide linemen with 30% faster drilling speeds, increasing your productivity while on the job. With up to 750ft-lbs max torque, this battery powered impact wrench gives more power for effortless removal of rusted or corroded hardware. It is ergonomically designed for the lineman, providing superior control whether in-bucket, on-ground, or climbing.

Key Features:

- ONE-KEY™ technology tool management system works directly from the power tools themselves, meaning that you can control all Milwaukee tools simply by connecting to the ONE-KEY online app. If the tool is ever lost or stolen, its tracking functionality can lock it out.
- Extended handle offers increased grip surface, perfectly fitting high voltage safety gloves for improved comfort, less fatigue, and balanced maneuverability
- First 7/16" high torque impact gun in the industry to be equipped with a QUIK-LOK™ chuck, providing faster and easier bit changes

Kit includes:

- 1 x M18 FUEL™ 7/16" hex utility HTIW w/ ONE-KEY™ (tool only)
- 2 x M18™ REDLITHIUM™ XC5.0 extended capacity battery pack
- 1 x M18™ & M12™ multi-voltage charger
- 1 x contractor bag
- 1 x inverter



Milwaukee - NSJPUL000023 - SHOCKWAVE™ Linemans Impact Auger Bits

Engineered to deliver cleaner, faster holes in wooden utility poles. Featuring a single spur design that scores the edge of the hole, creating a cleaner finish that allows bolts to slide through without resistance.

Key Features:

- The bits are coated with a reinforced anti-friction PTFE coating for overall smoother drilling and easier removal of the bit from the pole
- The aggressive feed screw and cutting edge pull the bit through the material while the optimized wide flute geometry quickly ejects the chips to clear the hole and reduce clogs, leading to overall faster drilling speeds
- Solid stemmed core for added strength
- Available in 18" and 24" lengths



Aerosols & Identification



Rainbow - NCFLMR000018 Jungle Formula Insect Repellent

Multi-purpose repellent that repels mosquitoes, chiggers, ticks, deer/stable/black flies, gnats, and fleas on exposed skin. It also repels mosquitoes that may transmit diseases such as encephalitis, west nile virus and the zika virus.

Key Features:

- Both aerosol and towelette contain extra-strength DEET
- Works for 6-8 hours



Rhino - NCIDCM000067 Marking HIT Kit

Accurately record damage to buried facilities such as fiber optic cable, pipelines, electrical lines, and more. Enables consistent photographic damage reporting by using a standardized tool to record every accident.

Key Features:

- Reduces unnecessary and costly legal actions
- High visibility damage and marking posts



Personal Safety



French Creek - NSPEBL000008 Shock Absorbing Lanyard

Tubular-elastic web lanyard with shock absorbing pack limits fall arrest forces to 900 lbs. when tested to OSHA and ANSI standards.

Key Features:

- 1 3/16" synthetic webbing with shock pack
- Stretches to minimize tripping and snagging hazards
- Standard 6' length relaxes to 4.5' when not stretched



French Creek - NSPEBL000013 Red Body Harness

Light-weight full body harness with super-quick bayonet chest and leg buckles, and one piece comfort back & shoulder pad.

Key Features:

- 3-point adjustable chest and leg straps
- Sliding back D-ring keeps fallen worker vertically suspended
- Light-weight, comes in M, L, XL sizes
- High strength synthetic webbing

Site Protection



Armada - NSJPUL000023 - Underground Cable Locator with Inductive Clamp

Underground cable locator makes locating wires and cables simple. Incorporates 5 different tracking modes (2 direct connect, 2 inductive, 1 passive), tracks many types of cabling including CATV, electrical, telephone, dog fencing, and landscape lighting, using either null or peak reception modes.

How it works: The cable locator transmits an easy-to-follow signal in 5 different selectable modes. Any of these modes allows users to locate the path of underground cables. Connecting the transmitter to the wire to be located enables the operator to follow the beeping signal with the receiver using the visual meter, the external speaker, or with the included headset.



Key Features:

- Dual direct-connect frequency transmitter (2Khz and 33Khz)
- Two additional inductive modes: built-in inductive antenna or inductive clamp
- Passive 50/60Hz tracing mode
- Audible (speaker or headset, both with volume control), or visual reception



U-TECK - NSJPMH000076 - 24" Yellow Safe-T Lid Temporary Manhole Cover

Provides fall-in protection while performing various functions with a manhole or handhole lid removed. Available for both manholes and handholes, these temporary covers have openings along the edge large enough to accommodate cables that extend out of the hole, and two hand openings for easy transport, placement, and removal.



Key Features:

- Made from high impact resistant polyethylene
- Environmentally stabilized to resist fading
- Lightweight and easily stored
- Custom sizes available



Watchdog - NSJPTS000056 - Compact Sign Stand

Traffic sign stands are an effective temporary and portable solution to bring attention to work and construction zones. This heavy-duty sign stand helps keep roadway work zones safe.

Key Features:

- Designed to hold 36" and 48" rigid signs of 5/8" thickness
- For low-to-medium wind conditions
- Compact when closed for storage
- Extendable mast